



## Express Stor Enterprise Series Unified Network Storage Provides Unprecedented Features and Expandability



Express Stor Windows Storage Server 2008 R2 Unified Storage Appliances with Serial Attached SCSI (SAS) capability offer enterprise level functionality and cost effective expansion at a very attractive price. The ES22xx Series places data on 22 10K rpm 4.6 ms seek 2.5" Enterprise drives offering high I/O per second performance for demanding block-based database and virtualized environments. The 64 bit implementation of Windows Storage Server 2008 R2 allows for the more effective use of additional system resources.

Unified Storage provides both NAS and IP-SAN capability in the same system. Available capacity is a "virtual" pool of storage that can be provisioned to support disk volumes for iSCSI LUN's and for file storage. Applications needing block level storage such as SQL and file data for user access can now co-exist on the same storage device. Combination IP-SAN and NAS solutions offer the lowest Total Cost of Ownership (TCO) of all storage technologies. The ease of installation and simple, yet high function, user interface saves money and time throughout the product lifecycle. MDI's unique enhancements differentiate the Express Stor in flexibility and reliability. The Express Stor offers a wide variety of optional software applications including replication, Write once file system support and archiving functionality.

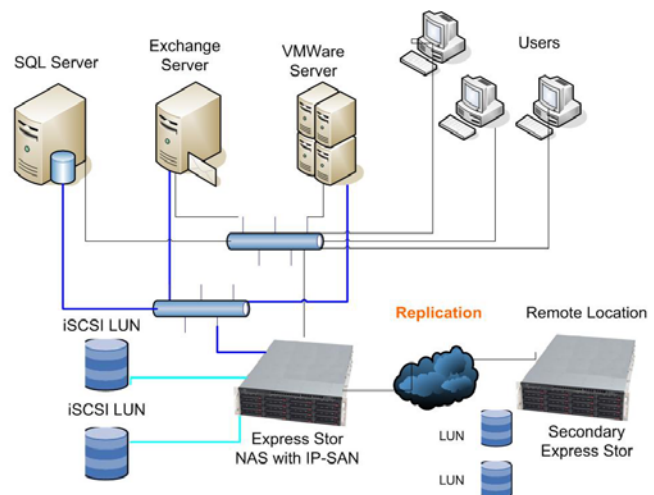
Unified Storage software features include:

- *Operating System Protection:* Anti-Virus and dual OS images in case of OS corruption.
- *Snapshot:* Both file data and LUN's can be protected with Shadow Copy Services.
- *File Server Resource Manager:* User Quotas, file screening, and reporting.
- *Single Instance Storage:* Central repository to eliminate duplicate files.
- *Searching and Indexing:* Creates a user searchable index of document contents.
- *Compliance Edition:* Optional **Write Once File System** to prevent data alteration.

Express Stor Appliances are designed to be the focal point for data protection for an application or an enterprise. MDI solutions can be pre-configured to support a variety of backup and disaster recovery techniques. If your requirements include IP-SAN, traditional backup to tape, disk to disk backup, replication to a remote location, or archiving to and restoring from optical media, Express Stor can handle your needs. Your initial investment is protected with a range of expansion units which can very economically grow the Express Stor capacity to over 120 TB.

### Express Stor Features

- Intel 5500 Series Xeon Processors.
- 6 to 12 GB RAM
- IPMI with Dedicated LAN
- SAS Backplane with Expander
- High Performance RAID Controller
- Two 10 Gb and Six Gb Ethernet Ports
- LVD 320 SCSI and SAS Ports for Backup Device Attachment



## Optional Configurations are available, including high-performance SAS disks

Feature	ES2230-NAR, ES2215-NAR (2U Rack) ES1400-NAR, ES1475-NAR, ES1450-NAR, ES1425-NAR (3U Rack)
<b>CPU</b>	Two Quad Core Xeon 5500 Series Processors
<b>Memory</b>	Models ES2230, ES2215, ES1400 and ES1475 = 12GB, Registered ECC Models ES1450 and ES1425 = 6GB, Registered ECC
<b>Drive Backplane</b>	Intelligent Serial Attached SCSI (SAS) Backplane with Edge Expander, 28 Drive Support
<b>Operating System</b>	Microsoft Windows 2008 Storage Server R2 with iSCSI Feature Pack and Duplicate Software Images for Recovery, Residing on Mirrored 10K RPM 4.6 ms Seek Drives
<b>ES2230-NAR Data Capacity</b>	(22) 300GB 1.2 MTBF Enterprise Serial ATA II 10K RPM 4.6 ms Seek Drives – 6.6 TB Raw Storage, 6 TB RAID 5 With Hot Spare or RAID 6 Usable
<b>ES2215-NAR Data Capacity</b>	(22) 150GB 1.2 MTBF Enterprise Serial ATA II 10K RPM 4.6 ms Seek Drives – 3.3 TB Raw Storage, 3 TB RAID 5 With Hot Spare or RAID 6 Usable
<b>ES1400-NAR Data Capacity</b>	(14) 1 TB 1.2 MTBF Enterprise Serial ATA II Drives – 14 TB Raw Storage, 12 TB RAID 6 Usable
<b>ES1475-NAR Data Capacity</b>	(14) 750GB 1.2 MTBF Enterprise Serial ATA II Drives – 10.5TB Raw Storage, 9 TB RAID 5 with Hot Spare or RAID 6
<b>ES1450-NAR Data Capacity</b>	(14) 500GB 1.2 MTBF Enterprise Serial ATA II Drives – 7 TB Raw Storage, 6 TB RAID 5 with Hot Spare or RAID 6
<b>ES1425-NAR Data Capacity</b>	(14) 250GB 1.2 MTBF Enterprise Serial ATA II Drives – 3.5 TB Raw Storage, 3 TB RAID 5 with Hot Spare or RAID 6
<b>Fault Tolerance</b>	Hot Swap Disk Drives 800W Redundant Hot Swap Power Supply Hot Swap Fans
<b>RAID Controller With External Port for Expansion Units</b>	Hardware Accelerated Hot Swap & Hot Spare Support Multiple Logical Volumes for Flexibility Supports RAID 0, 1, 10, 5, 6 S.M.A.R.T Disk Drive Monitoring for Reliability Dynamic Sector Repair for Robust Data Protection
<b>Additional I/O</b>	DVD-ROM Drive (External USB Attachment on ES2230 and ES2215)
<b>SCSI Output</b>	LVD 320 SCSI Port For Tape Backup or Optical Library
<b>SAS Output</b>	Serial Attached SCSI Port For Tape Backup or Optical Library
<b>10 Gb Ethernet Connections</b>	Two 10 Gigabit Ports w/Auto Fail-over, Aggregation & Load Balancing, or MPIO Support for iSCSI
<b>Gb Ethernet Connections</b>	Six 10/100/1000 Gigabit Ports w/Auto Fail-over, Aggregation & Load Balancing, or MPIO Support for iSCSI
<b>Added System Availability</b>	Smart Signaling UPS Support Environmental Monitoring of Temperature, CPU, Fans, Etc.
<b>IPMI</b>	Intelligent Platform Management Interface with Dedicated LAN Port
<b>Network Environment</b>	Windows (All), Unix, Linux, Novell
<b>Protocol Support</b>	TCP/IP, AppleTalk, HTTP, CIFS/SMB, NFS v 3, FTP, ATP, NCP
<b>Security Management</b>	Active Directory Services (ADS), Kerberos, Unix (NIS), Novell (NDS) File/Folder/Share-Level Security User-Level Security ACL (Access Control List) User Disk Quota Control SSL 128-bit Encryption
<b>Other Features</b>	Integrated Anti-Virus & Snapshot Optional - Integrated Tape Library Backup Options, Replication, Write Once File System, Archiving
<b>Dimensions</b>	(2U) Height 3.5" (89mm), Width 17.2" (437 mm), Depth 24.8" (630 mm) (3U) Height 5.2" (132mm), Width 17.2" (437 mm), Depth 25.5" (648 mm)
<b>Gross Weight</b>	2U = 80 lbs (41.8 kg), 3U =100 lbs (45.4 kg)